

# SONISCAPE™ Outdoor Loudspeaker Systems

CEDIA  
EXPO 2009  
Booth 5342

## For Upscale Residential and Commercial Landscapes



Until now outdoor loudspeaker systems have always been a haphazard affair. The recent development of SoniScape Outdoor Loudspeaker Systems has changed everything. SoniScape Outdoor Systems produce a richly dimensional, evenly dispersed soundfield in an otherwise uncontrolled environment. This is accomplished through a full array of discreet, strategically placed SoniScape Satellight Loudspeakers and powerful Subsonic Woofers.

SoniScape Systems are easily tailored to suit each unique outdoor environment and entertainment lifestyle. You can mix and match any combination of Satellight Loudspeakers and In-Ground Subsonic Woofers with SoniScape's 70.7 volt 'daisy-chain' wiring installation.

SoniScape Systems can be easily positioned in trees, hidden in planting beds, or concealed along walkways.

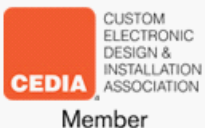


With the use of cutting edge materials and professional grade electronics, SoniScape Outdoor Loudspeaker Systems are designed to deliver exceptional performance and years of enjoyment.



Ideal for hotels, resorts, and other large scale projects. The perfect solution for multiple zone installations. Install around swimming pools, spas, reception areas, observation decks, walkways and entrance areas .

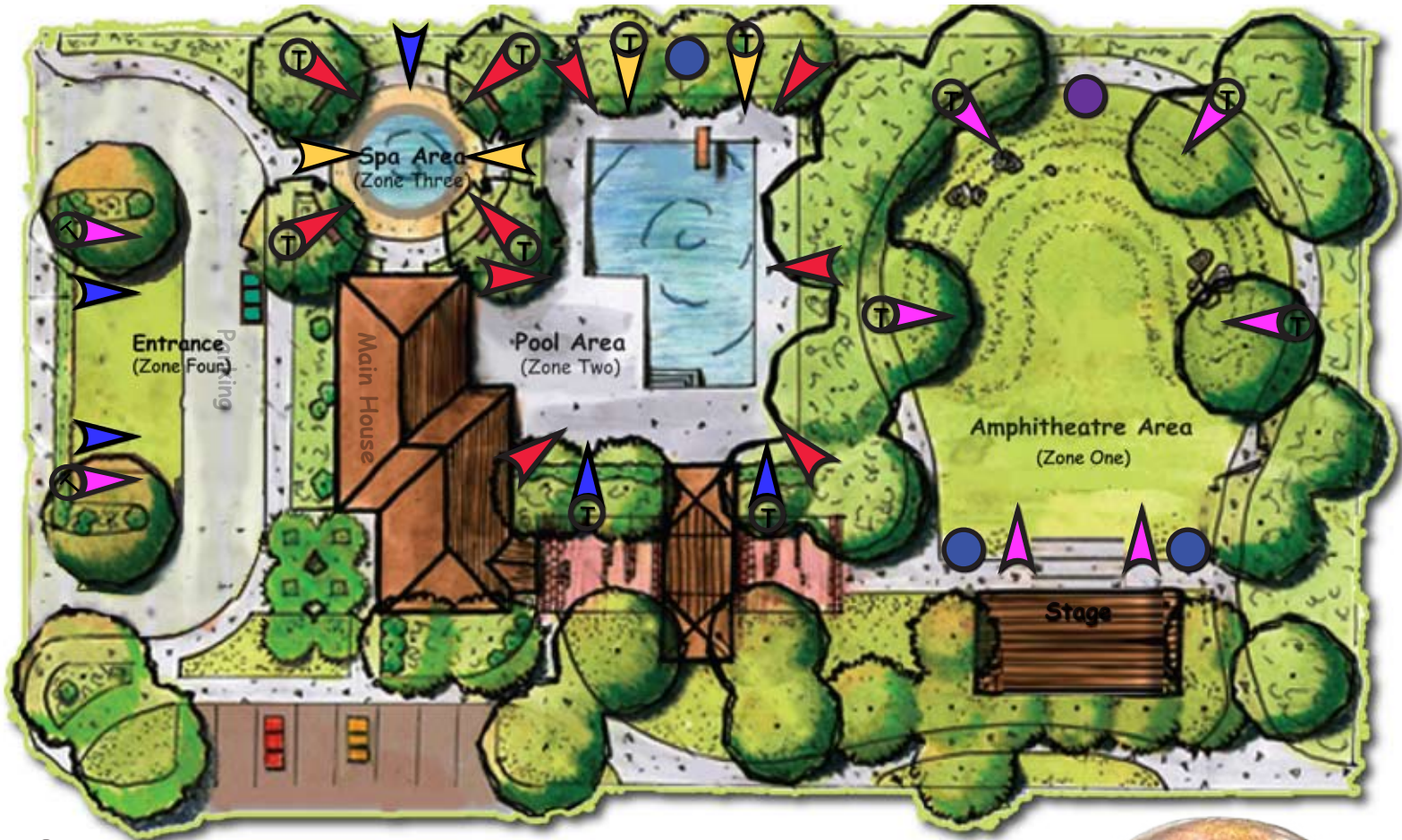
**Simply put:**  
*It doesn't get any better than SONISCAPE™*



AmbiSonic Systems logo, SoniScape and Satellight are trademarks of AmbiSonic Systems, LLC. All rights reserved. Patents pending.



# SONISCAPE™ Outdoor Loudspeaker Systems



Ⓣ Indicates Tree Mounting



AmbiSonic Systems logo, SoniScape and Satelight are trademarks of AmbiSonic Systems, LLC. All rights reserved. Patents pending.

